

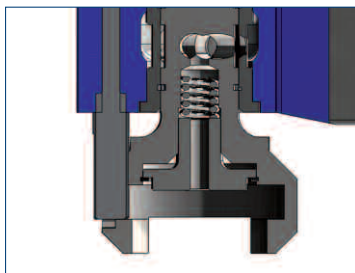
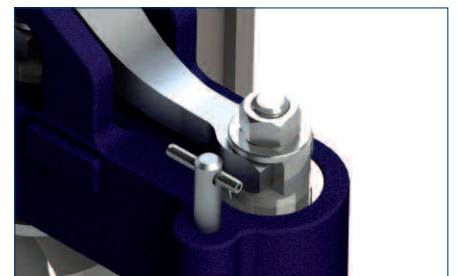
The Quality is in the Detail

Quick Change Baffle Head Assembly for High Performance

Designed with optimised airflow, the Baffle Head assembly allows for a reduction in finish set time through the improved equalisation of cavity air pressure.

Secure Lockring design

The use of a “dog-bone” style equaliser arm location results in a stronger shaft which eliminates failure due to fatigue around the locking tenon, additionally the heel of the equaliser arm is contoured for smooth operation and prolonged service life. A single common locking design is used for all cavities reducing inventory .



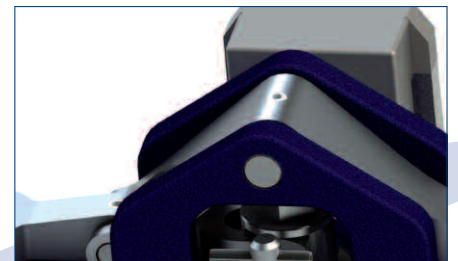
Improved Pressure Plate Design

A long stem pressure plate design is used to ensure stability and positive location onto the baffle during operation. The plate is retained in place using a strong and very secure 360° snap ring eliminating the drawbacks associated with previous vertical pin designs.

Carbon contamination is dramatically reduced and air leakage is virtually eliminated due to the “closed cup” design . Routine maintenance and assembly is simple with the minimum of assembly parts.

Strong Equaliser Arm Support

The equaliser arm support bracket has been strengthened in comparison to the standard unit, the length of contact of the pivot has been increased improving service life and reducing the risk of breakage.



Benefits

- Equalisation of settle blow pressure across all individual cavities
- Improved service life of locking
- Smooth baffle operation
- Common locking design for all cavities
- Direct interchange with standard equipment
- Available in DG & TG



LATTIMER

CREATING A NEW VISION FOR GLASS ENGINEERING

Lattimer
79-83 Shakespeare Street
Southport, Merseyside
England PR8 5AP

Tel: +44 (0) 1704 535040
Fax: +44 (0) 1704 541046
Email: sales@lattimer.com
Web: www.lattimer.com

Lattimer
3603 North Mill Road
Vineland
New Jersey 08360, USA

Tel: +1 (856) 691 2203
Fax: +1 (856) 691 5509
Email: salesamericas@lattimer.com
Web: www.lattimer.com